

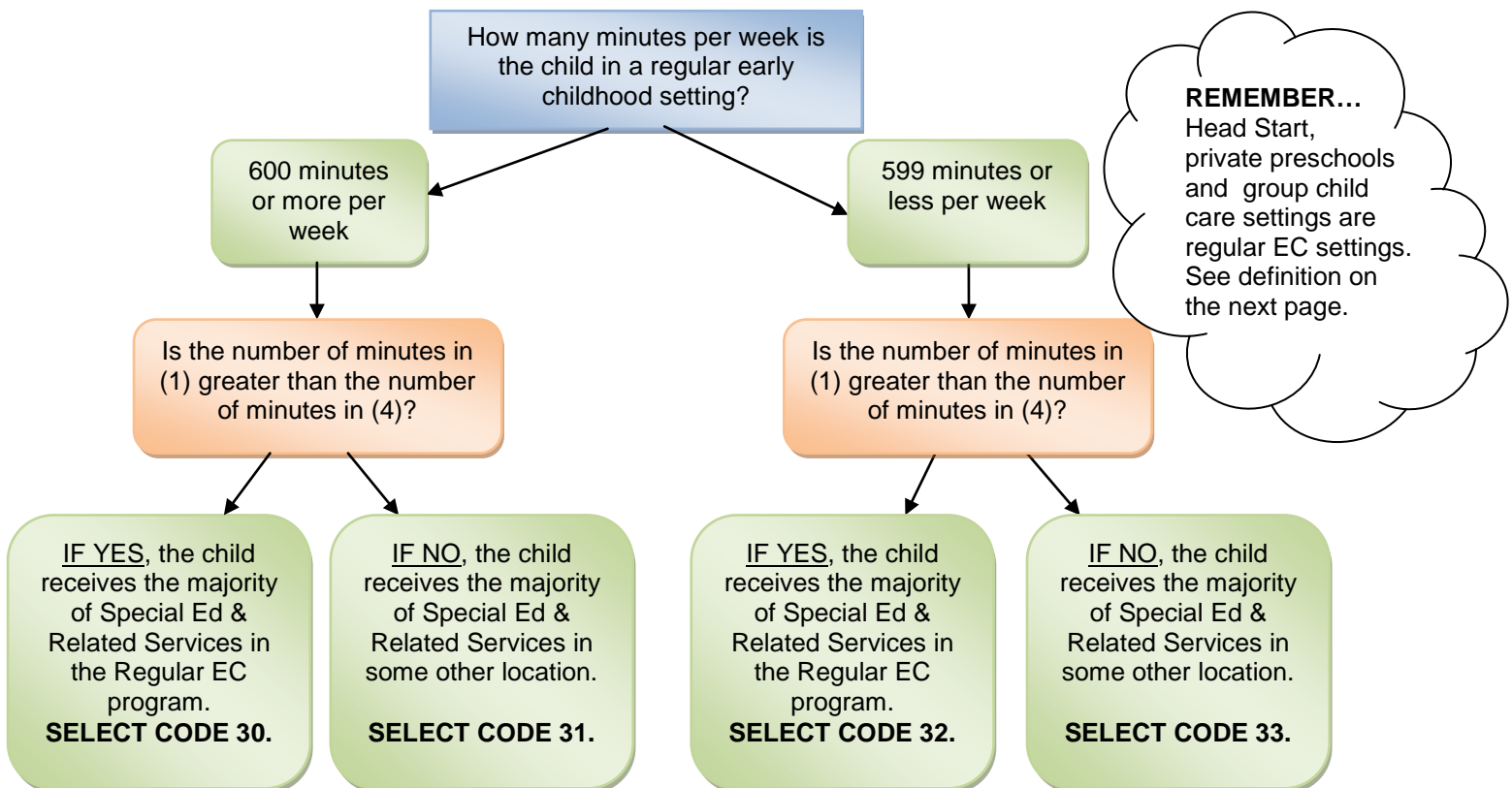
Early Childhood Educational Environment Codes Worksheet

Does the child attend a regular early childhood program?

- **IF NO, DO NOT** complete worksheet and select EE Code 23 (Separate Class), 24 (Separate School), 25 (Residential Facility), 26 (Home), or 27 (Service Provider Location). These definitions are found on the next page
- **IF YES**, complete the rest of this worksheet.

Special Education and Related Services within the General Education Classroom	Minutes Per Week in Setting
	(1)

PARTICIPATION IN SPECIAL EDUCATION CLASSES/ SERVICES	
Special Education Services – Outside General Education	Minutes Per Week in Setting
	(2)
Related Services – Outside General Education	Minutes Per Week in Setting
	(3)
TOTAL PARTICIPATION IN SPECIAL EDUCATION CLASSES/SERVICES (OUTSIDE GENERAL EDUCATION) (2) + (3)	(4)



Early Childhood Educational Environment Codes Worksheet

Definition of a Regular Early Childhood Program – a program that includes at least 50 percent nondisabled children.¹ Regular early childhood programs include, but are not limited to:

- Head Start
- Kindergarten
- Private preschools
- Early Childhood Block Grant/Preschool for All programs
- Blended classrooms
- Private kindergartens or preschools
- Group child development center or child care

Code 30 – Regular Early Childhood Program: Child receives the majority of hours of special education and related services the Regular Early Childhood Program (and the child attends a Regular Early Childhood Program at least 10 hours/600 minutes or more per week).

Code 31 – Regular Early Childhood Program: child receives the majority of hours of special education and related services in some other location (and the child attends a Regular Early Childhood Program at least 10 hours/600 minutes or more per week).

Code 32 – Regular Early Childhood Program: child receives the majority of hours of special education and related services in Regular Early Childhood Program (and the child attends a Regular Early Childhood Program less than 10 hours/599 minutes or less per week).

Code 33 – Regular Early Childhood Program: child receives the majority of hours of special education and related services in some other location (and the child attends a Regular Early Childhood Program less than 10 hours/599 minutes or less per week).

Code 23 – Special education Program - Special Education Class: child receives all special education instructional and/or related services in a program with less than 50 percent nondisabled children. (Do not include children who also attended a Regular Early Childhood Program. These children should be reported under Codes 30, 31, 32 or 33.)

Code 24 - Special education Program - Separate School: child receives all special education instructional and/or related services in a public or private day school designed specifically for children with disabilities. (Do not include children who also attended a Regular Early Childhood Program. These children should be reported under Codes 30, 31, 32 or 33.)

Code 25 - Special Education Program - Residential facility: child receives all special education instructional and/or related services in a publicly or privately operated residential school or residential medical facility on an inpatient basis. (Do not include children who also attended a Regular Early Childhood Program. These children should be reported under Codes 30, 31, 32 or 33.)

Code 26 - Home: child receives all special education and related services in the principal residence of the child's family or caregivers (including babysitters), and who attended neither a Regular Early Childhood Program nor a Special Education Program provided in a separate class, separate school or residential facility. Include children who receive special education both at home and in a service provider location or some other location that is not in any other category.

Code 27 - Service provider location or some other location that is not in any other category: Child receives all special education and related services from a service provider or some other location that is not in any other category, and who attended neither a Regular Early Childhood Program or a Special Education Program provided in a separate class, separate school, or residential facility. For example, speech instruction provided in: private clinicians' offices, clinicians' offices located in school buildings, hospital facilities on an outpatient basis, and libraries and other public locations.

¹ The Illinois State Board of Education (ISBE) recognizes this definition does not align with that given in Section 226.730 of the rules for special education; however, this agency (ISBE) does not have the authority to alter federal reporting requirements. Therefore, for collection purposes we must report Early Childhood educational environment data in accordance with the federal requirements.